

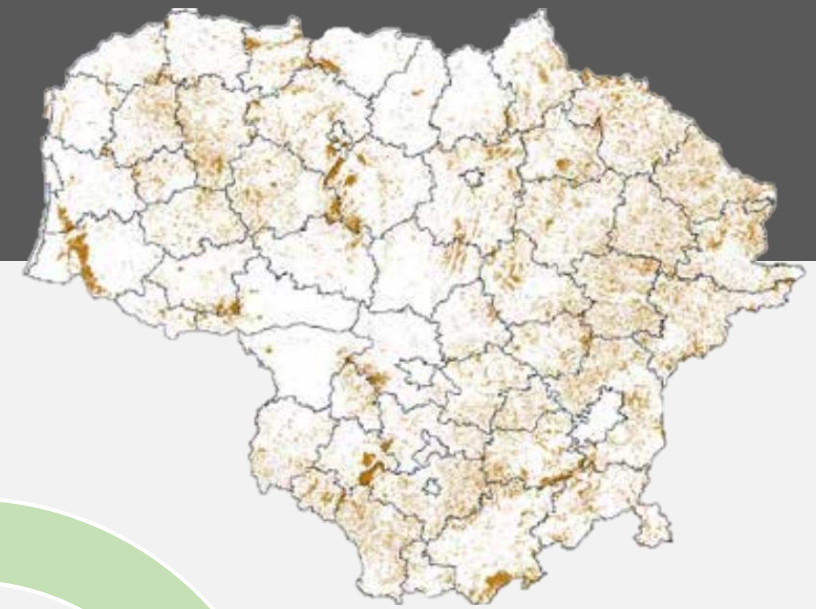
LITHUANIA: REWETTING OF PEATLANDS TO MITIGATE GHG EMISSIONS

Agnė Prakapienė
Lithuanian Ministry of Agriculture

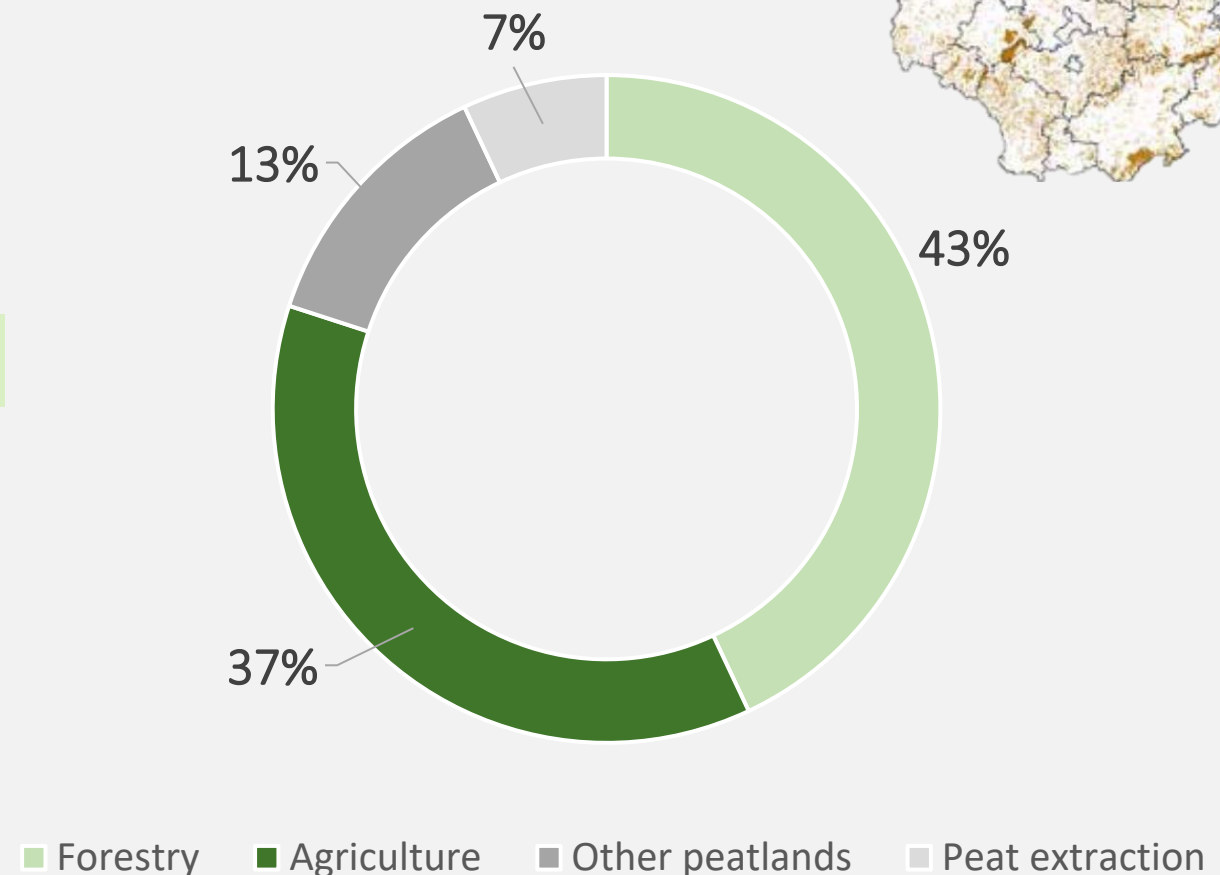
EUKI Kick-off meeting
12th May 2022



PEATLANDS IN LITHUANIA



- About 650 thou. ha, 10 % of the country's area
- Around 2/3 drained and degraded
- Mostly used in agriculture and forestry
- Major source of GHG emissions
- Rewetting target 8000 ha by 2030



Source: *Lithuania's peatlands, 2018*

RECOVERY AND RESILIENCE FACILITY: PEATLAND REWETTING IN LITHUANIA

Investment: 16 Mio EUR by 2026

Target: 8000 ha rewetted peatlands*

Beneficiaries: primarily farmers but also other landowners (e.g., protected areas)



CHALLENGES

- Data (maps, peatland condition)
- Scaled-up restoration know-how
- Awareness of peatland values &
- Financial incentives for rewetting

OPPORTUNITIES

- Pilot project, scaling-up experience
- Exploration of carbon farming, paludiculture
- Benefits to climate, biodiversity, water

**similar target for 2030 set in the National Climate Change Agenda adopted in 2021*