



Dianna Kopansky

Global Peatlands Coordinator
UNEP



Global Peatlands Initiative



UN
environment
programme

esa
SATELLIGENCE

Ramsar

UNEP

WCMC

**GREIFSWALD
MIRE
CE**

FAO
FIAT PANIS
**Food and Agriculture
Organization of the
United Nations**

CIFOR

**UNIVERSITY OF
LEICESTER**

REPEAT

**WORLD
RESOURCES
INSTITUTE**

**European
Commission**
Joint Research Centre

**GRID
ARENDA**
A Centre Collaborating with UNEP

**THE UNIVERSITY OF
SYDNEY**

WETFUTURES

**Global
Green Growth
Institute**

**BAX
& COMPANY**
VALUE FROM SCIENCE AND TECHNOLOGY
**Department
for Environment
Food & Rural Affairs**

IFAD
INTERNATIONAL
FUND FOR
AGRICULTURAL
DEVELOPMENT

**Convention on
Biological Diversity**

IUCN
GSS
remote sensing
SOLUTIONS

SRUC

IKI
INTERNATIONAL
CLIMATE
INITIATIVE

**University of
St Andrews**

**CONSERVATION
INTERNATIONAL**

**UNIVERSITY OF
PLYMOUTH**

yew
YOUTH
ENGAGED IN
WETLANDS

NORTH PENNINES
Area of Outstanding Natural Beauty

UNESCO
Educational, Scientific and
Cultural Organization
North Pennines
UNESCO
Global Geopark

Eurosite

profonape
recursos para la naturaleza

**The Nature
Conservancy**

**International
FORESTRY
STUDENTS'
ASSOCIATION**
IFSA

**GLOBAL
PULSE**

NABU

**UNIVERSITY OF
WATERLOO**

**water
the
INSTITUTE**

**climate
catalyst**

SPACE4GOOD

**International Mire
Conservation Group**

SarVision

**DAVID SUZUKI
FOUNDATION**
One nature.

**FONDATION
DAVID SUZUKI**
Un monde. Une nature.

**Wetlands
INTERNATIONAL**

**Mullion
group**

UNIVERSITY OF ZIMBABWE

**Badan
Restorasi
Gambut**

WWF

RSPO
Roundtable on Sustainable Palm Oil

**NILE BASIN INITIATIVE
INITIATIVE DU BASSIN DU NIL**

UNIVERSITY OF LEEDS

**WAGENINGEN
UNIVERSITY & RESEARCH**

**WILDLIFE
CONSERVATION
SOCIETY**

WCS

WCS



Brazzaville Declaration – Congo Peatlands



International Tropical Peatlands Center



UNEA-4 Resolution



UN-wide SSC Best Practice for SDG-15



Global Peatlands Assessment



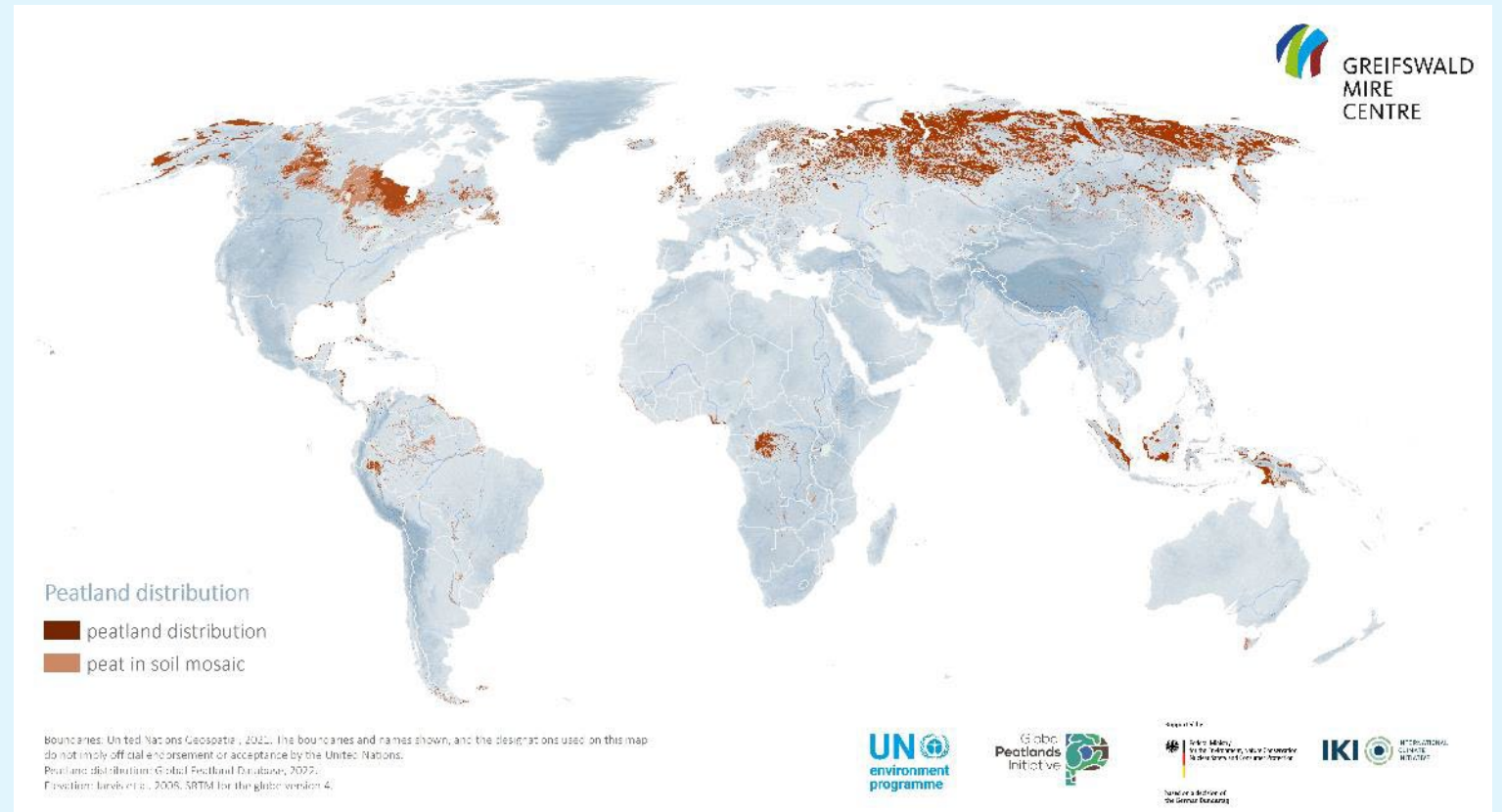
Global Peatlands Assessment: The State of the World's Peatlands

EVIDENCE FOR ACTION TOWARD THE CONSERVATION, RESTORATION, AND SUSTAINABLE MANAGEMENT OF PEATLANDS

MAIN REPORT



© Andrea Rizzuto



The power of scientific assessments



From left to right: António Feijó (the Gulbenkian Foundation's President), Hoesung Lee (Chair of IPCC), Anne Larigauderie (Executive Secretary of IPBES) and Angela Merkel (the Gulbenkian Prize for Humanity 2022 Jury's President)

ipcc
INTERGOVERNMENTAL PANEL ON
climate change



ipbes
Science and Policy
for People and Nature

“the role of science on the front line of tackling climate change and the loss of biodiversity.”

Jury of the 2022 Gulbenkian Prize
for Humanity

The people and structures involved

Authors, reviewers, review editors and information providers

Structure's name	Responsible(s)
Scientific Advisory Group (GPI-SAG)	Global Experts
GPI Steering Committee (GPI-SC)	UNEP, FAO, GMC, IPS, Indonesian Government
GPA Development Team	UNEP, FAO, GMC, Ramsar Sec, UNEP-WCMC
GPA Coordination Team	UNEP-WCMC & UNEP
GPI Research Working Group Secretariat	Researchers & UNEP
GPI Coordinator	UNEP

GPA
in numbers



226
contributors



51
countries



44% women
56% men




Expected outcomes of the GPA



Support strategic and inter-sectoral decision-making

Generate political momentum & show options for practice and action



Increase both the funds and the interdisciplinary research on peatlands

Strengthen data systems on peatland extent, condition and uses

Offer a robust process for developing future assessments



@Michelle Garneau



@Zhao-Jun Bu



@Hans Joosten

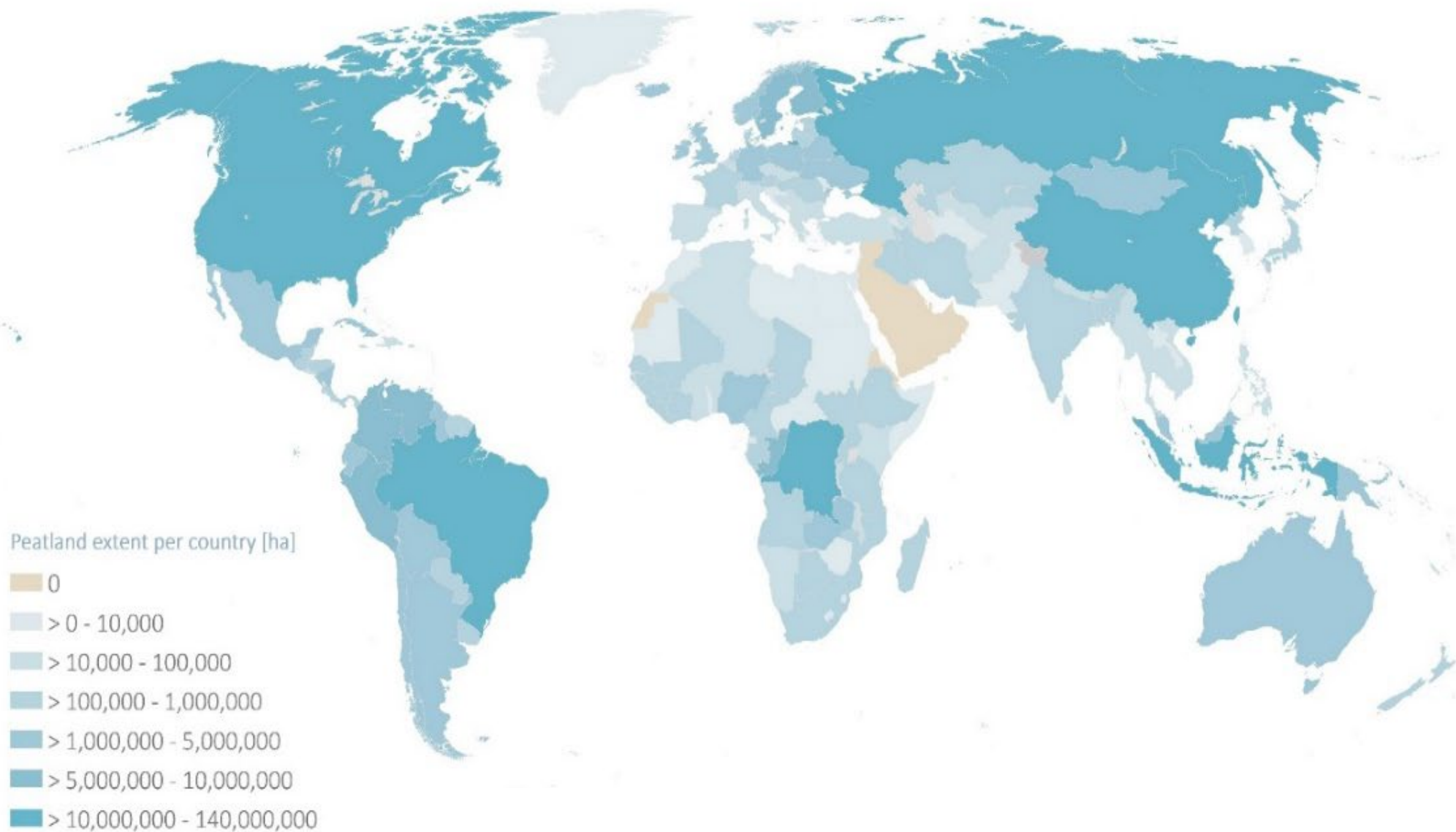


488 million hectares peat globally
600 billion tonnes carbon stored in peat

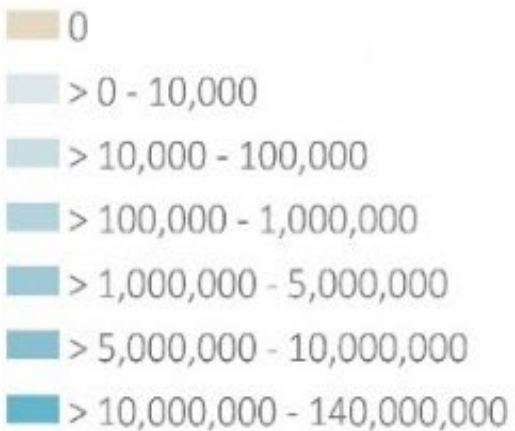


488 million hectares peat globally
600 billion tonnes carbon stored in peat
Average carbon storage: 1,200 tonnes per hectare





Peatland extent per country [ha]



Russian Federation	139 million ha
Canada	119 million ha
United States	39 million ha
Brazil	26 million ha
Indonesia	21 million ha
DRC	18 million ha
Republic of Congo	13 million ha
Finland	8 million ha
Peru	8 million ha



88 % of peatlands are undrained
12% degraded and losing peat



Drained

Undrained

Status of Global Peatlands (%)

North America

LAC

Africa

Oceania

Asia

Europe

0%

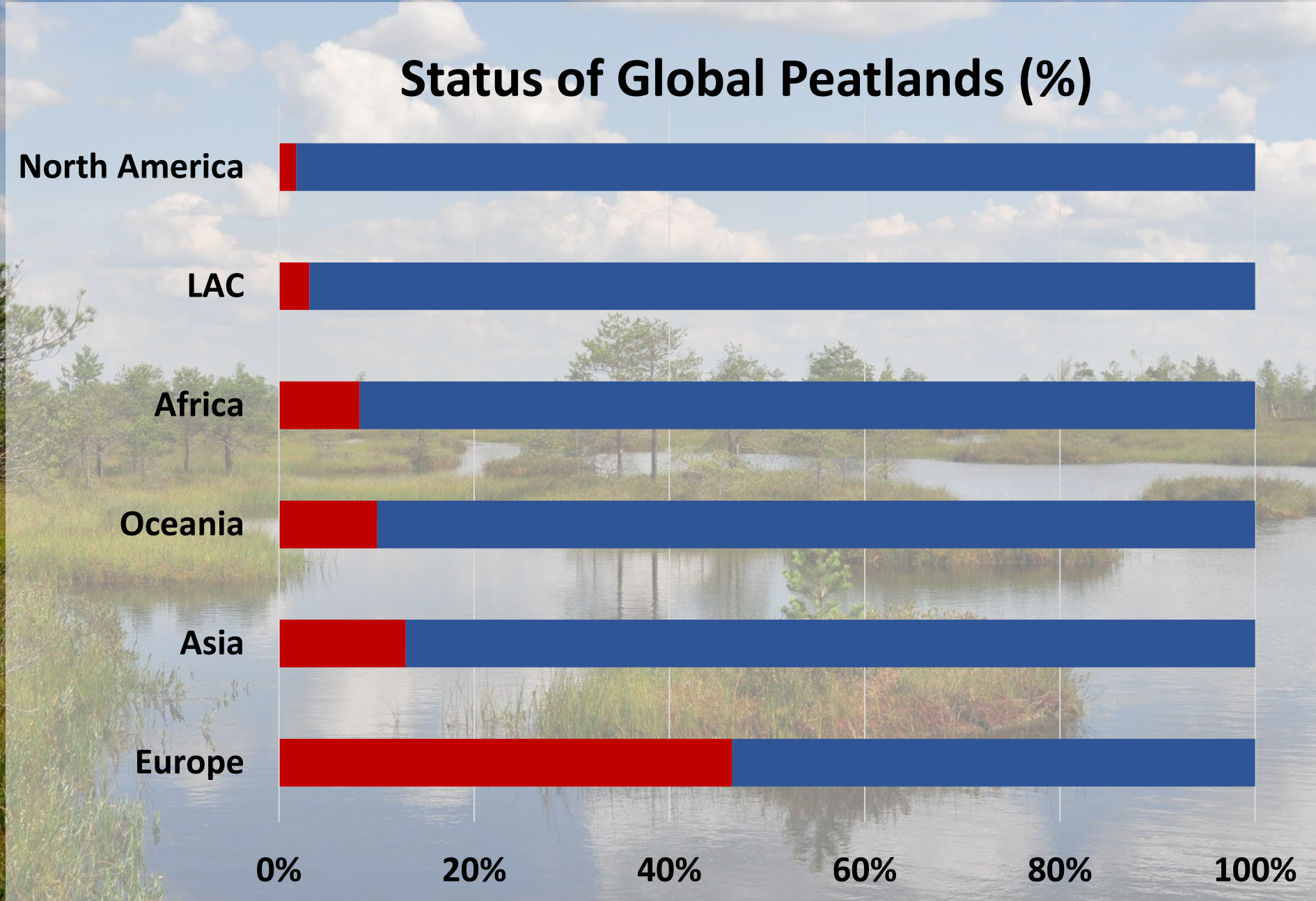
20%

40%

60%

80%

100%





500,000 ha of peatlands that are accumulating peat (and thus actively capturing and storing carbon) are being destroyed by human activities annually



Peat loss = 40% of 1.5°C carbon budget

Peat loss = 12% of 2°C carbon budget







Collaboration & Knowledge Exchange

Peatlands Matter

An aerial photograph of a peatland landscape at sunset. A winding river flows through the center of the image, reflecting the golden light of the setting sun. The landscape is a mix of green peatlands, brown dead wood, and distant mountains under a dramatic, orange-hued sky. The text "Peatlands Matter" is overlaid in white in the upper center.

Global Peatlands Assessment: The State of the World's Peatlands

EVIDENCE FOR ACTION TOWARD THE CONSERVATION,
RESTORATION, AND SUSTAINABLE MANAGEMENT OF PEATLANDS

MAIN REPORT

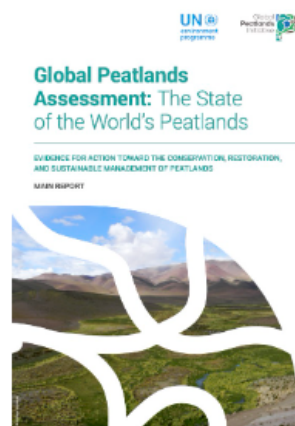


Key Recommendations

- ✓ **Expand protected area** systems to include peatlands
- ✓ **Phase out harmful operations on peatlands and rewet them**, by strengthening regulations, and creating subsidies and fiscal mechanisms.
- ✓ **Develop and maintain data systems** on peatland extent and uses to improve mapping and inform policy planning
- ✓ **Form fair and transparent governance systems** that cross sectors and empower stewardship by Indigenous Peoples and Local Communities
- ✓ **Support collaboration** and engage in international networks and initiatives

Global Peatlands Assessment: The State of the World's Peatlands

17 November 2022




Peatlands are unique and rare ecosystems that, despite only covering around 3-4% of the planet's land surface, they contain up to one-third of the world's soil carbon, which is twice the amount of carbon as found in the world's forests. Keeping this carbon locked away is absolutely critical to achieving global climate goals. However, about 12% of current peatlands have been drained and degraded, contributing to 4% of annual global human-induced emissions.


The Global Peatlands Assessment (GPA) aims to provide a better understanding of what peatlands are, where they are found, what condition they are in and how actions can be taken to protect, restore and sustainably manage them. It also provides a valuable baseline for improvement against future assessments and paves the way for the development of a comprehensive global peatland inventory, as called for in the [UNEA4/16 Resolution](#). It includes an updated Global Peatland Map, Regional Peatland Extent Maps, and other Hotspot Maps to highlight threats and opportunities for peatland management.

Download

Global Peatlands Assessment: The State of the World's Peatlands

 [Main report](#)

 [Summary for Policy Makers](#)

 [The Global Peatland Map 2.0](#)

<https://www.unep.org/resources/global-peatlands-assessment-2022>

Global Peatlands Initiative



BE PART OF THE SOLUTION!

Because #PeatlandsMatter

To learn more about this Initiative please contact:

Dianna Kopansky, UN Environment Programme dianna.kopansky@un.org

And have a look at our website: <http://www.globalpeatlands.org/>